

Solutions For The Digital Evidence Lifecycle®

TIM - SOFTWARE IMAGING (MADE BETTER)

Tableau's new software imager, TIM, outperforms all leading forensic software imaging tools. Released in January 2010, TIM provides unprecedented imager function, performance, and ease of use. TIM is the first software imager built for today's multi-core, multi-threading computer architectures.

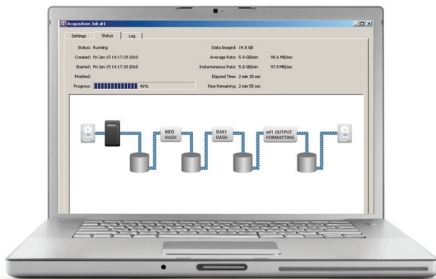
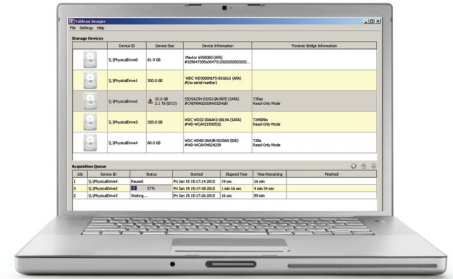
BLAZING FAST .E01 AND .DD IMAGING

Benchmark testing proves it. Data transfer speeds of 105 MB/sec (.E01) and 120 MB/sec (.dd) were measured using Tableau write blockers¹. Measured rates were up to 4 times faster than other commonly used imaging software.

If it's speed you need, visit www.tableau.com/TIM to download your free version of TIM.

EASE OF USE AND INFORMATION RICH

TIM's main imaging dashboard displays two user windows: Storage Devices and Acquisition Queue. The Storage Devices window incorporates all current functions of Tableau Disk Monitor (TDM) software. Users may view, save, or print write blocker and storage device information from this window. As with all Tableau imaging tools, TIM detects and defeats hidden disk regions (HPA, DCO).



To start or schedule an acquisition, simply right-click on the device graphic. With TIM, you now have the flexibility to run single or parallel jobs.

The Acquisition Queue window shows key imaging job information including Job ID, Device ID, Status, Start Time, Elapsed Time, Time Remaining, and Completion Status. Double-clicking on an active acquisition opens the TIM Acquisition Job Process Status window (shown left). This dynamic graphic displays real-time process information including process bottlenecks. Process status, device details, and hash calculations (MD5, SHA-1) are also displayed.

BE MORE PRODUCTIVE WITH TIM

No other imaging software can make this claim: "Built to maximize data transfer speed through Tableau write blockers". Try TIM for yourself and improve your data acquisition performance. For more information about TIM, please visit us at www.tableau.com.

1 - Imager comparison tests conducted with Tableau T35es eSATA Forensic Bridge, using eSATA host interface connection.

